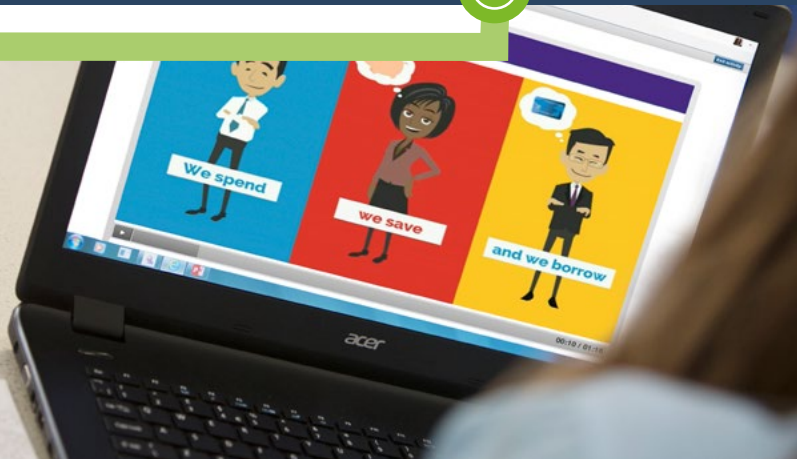




Lessons in Financial Education

SEND Guide

We have launched additional resources to accompany the LiFE Programme, removing barriers to learning for children, young people and adults with SEND



LiFE was designed with accessibility in mind. The online programme is bright & colourful with engaging animations and sound.

LiFE can be accessed anywhere with an internet connection, so learners can work at their own speed in a space where they feel comfortable.

The text is broken into small chunks on a cream background, with new words in bold, so it is manageable and easier to read.

It supports learners who:

- prefer printed resources
- struggle with using a computer
- have sensory or physical impairment
- have difficulty reading or processing information
- like a 'checklist'
- are visual learners or learn by doing
- have behavioural difficulties

Engaging & supporting learners with SEND

We have created 75 additional learning activities, including:

- Sensory & physical
- Creative & imagination
- Role play
- Logic
- Observation
- Discussion & debate
- Brainstorming & research
- Writing



Role play / sensory

Set up a pretend 'garage sale' or auction with a selection of items. Decide on your starting prices for the different items and let two people 'bid' different amounts of money they would be willing to pay for them.

Observational / creative

Look through a local or national newspaper - can you find any items for sale? Circle any adverts you find or cut them out. You could make a collage using the adverts you have found.

Is the cost of selling listed in the newspaper, or is it free?

Logic / physical

Do you have any small change that you could start saving up, or do you already have a penny jar or piggy bank?

Save some coins or count how much you have already saved.

These activities support many teaching methods, including:

- Individual, pair or group work
- Extension or research activities
- Offline or flipped learning
- Homework
- Cross curricular
- Differentiation
- Skill building
- Family learning



The SEND Guide

The SEND Guide is easy to print and share with your learners, saving time for busy support staff, and allowing all learners to have a personalised learning experience.

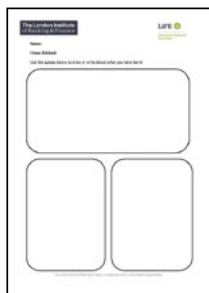
The SEND Guide introduction explains each resource and suggests materials and websites, making LiFE easy to use and get started.

What does it include?

- Progress charts & learning plans
- Printable quizzes & surveys
- Feedback & reflection sheets
- Blank milestone certificate
- Additional activities & worksheets
- Transcripts on request
- Glossary by topic & alphabetically



Blank milestone certificate



Feedback & reflection sheets





SNAAP – Special Needs Activities and Advisory Project

We have worked collaboratively with the experts at SNAAP, a special needs charity to ensure the SEND Guide for LiFE meets the needs of all learners. The resources have been piloted by the children and families at SNAAP, and we will continue to develop our SEND resources.

“ We are proud to be supporting The London Institute of Banking & Finance and be involved in developing this much needed resource. It is imperative for everyone to have access to good financial education. This guide supports and enables individuals and practitioners alike to overcome personal and educational obstacles, allowing them to succeed and achieve. ”

SNAAP Trustees, August 2017
www.snaap.org.uk

Feedback

We are keen to hear the views of people using the SEND Guide, which will enable us to continue to improve and develop LiFE and the accompanying resources.

We welcome all feedback from learners and support staff, which can be submitted through the survey within the programme, or by speaking to our team by phone or email on the details below.



Getting started with LiFE

If you support learners you think would benefit from this flexible programme, would like preview access or you would like to work together to further develop our SEND resources, get in touch with our Community & Outreach team at **communityoutreach@libf.ac.uk** or call 01227 818680